



# RCDEVS CLOUD SERVICES

The specifications and information in this document are subject to change without notice. Companies, names, and data used in examples herein are fictitious unless otherwise noted. This document may not be copied or distributed by any means, in whole or in part, for any reason, without the express written permission of RCDevs Security.

WebADM and OpenOTP are trademarks of RCDevs. All further trademarks are the property of their respective owners.

No guarantee is given for the correctness of the information contained in this document. Please send any comments or corrections to [info@rcdevs.com](mailto:info@rcdevs.com).

## 1. Overview

This document provides the necessary information for configuring RCDevs Cloud services on WebADM v2.x. This document is not applicable for WebADM 1.x versions.

### What is RCDevs Cloud Services ?

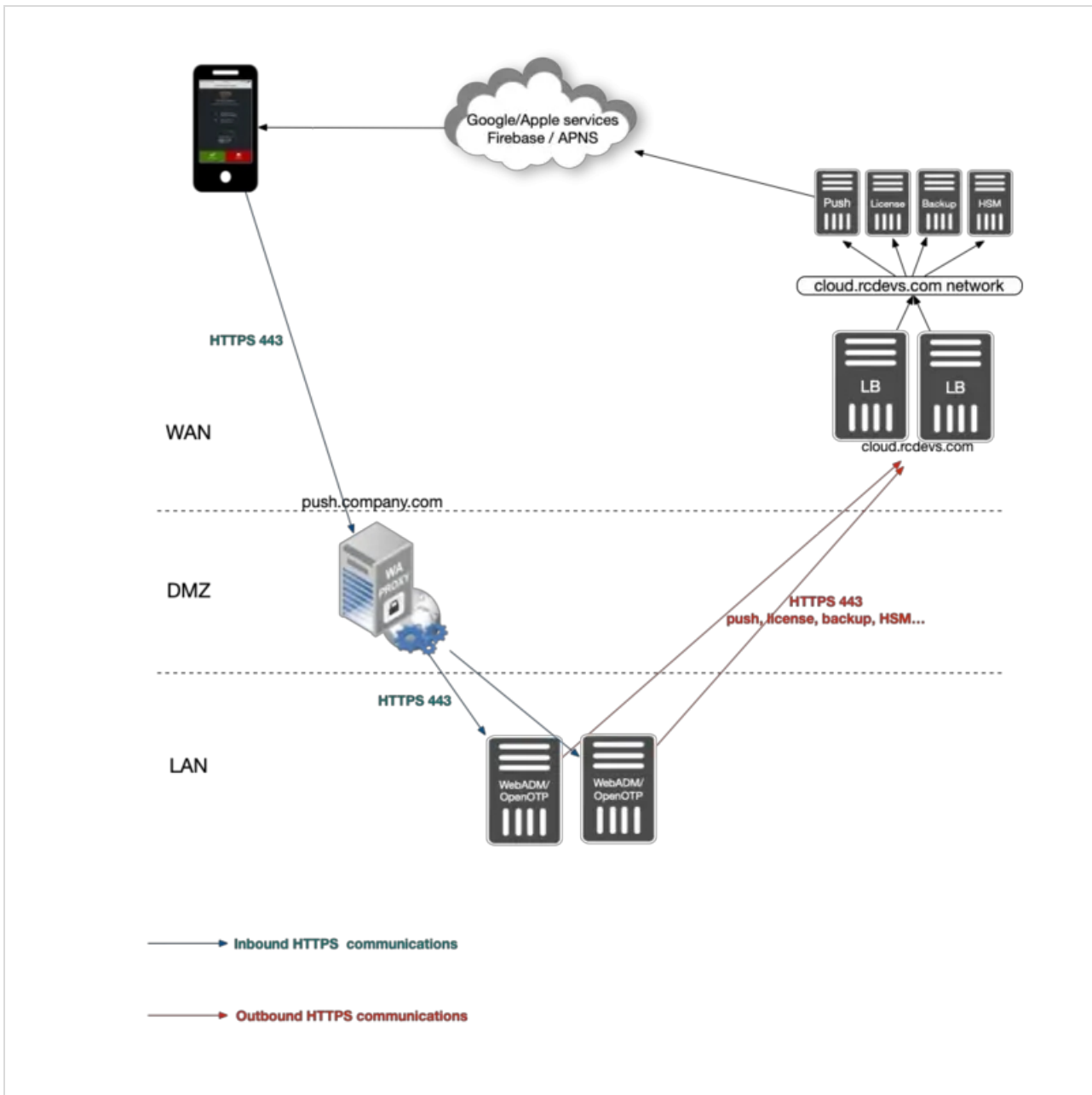
RCDevs Cloud Services are hosted by RCDevs Security SA, providing additional capabilities for RCDevs enterprise solutions, examples of cloud based functionality are:

- > Push services,
- > Document Sealing and Timestamping (eiDas),
- > SMS Service,
- > Cloud licensing,
- > External PKI for RCDevs' licensees.

The connection from the local WebADM server to the RCDevs Cloud is based on HTTP2 protocol, and can be transported through a proxy server between WebADM servers and RCDevs Cloud infrastructure. The unique endpoint for all services (push, licenses...) is <https://cloud.rcdevs.com>. Your WebADM server(s) must be allowed to reach <https://cloud.rcdevs.com> port 443 in order to use RCDevs Cloud Services.

Please note that this document is not a guide for installing WebADM or its applications (Web Services and WebApps). Specific application guides are available in [RCDevs Online Documentation](#). WebADM use or administration is not covered by this guide and is documented in the RCDevs [WebADM Administrator Guide](#). In this guide, we will consider a common installation scenario where WebADM v2.x is running in cluster mode with two active servers.

## 2. Requirements and configurations to use RCDevs Cloud Services



## 2.1 Mandatory

- > Running WebADM v2.x
- > WebADM server(s) must be licensed with a freeware or enterprise license. Freeware licenses can be self-generated from [cloud.rcdevs.com/freeware-license/](https://cloud.rcdevs.com/freeware-license/)
- > WebADM server(s) must be able to reach <https://cloud.rcdevs.com/> on port 443.
- > Enable setting `cloud_service yes` in `/opt/webadm/conf/webadm.conf`

```
# Enable RCDevs cloud services such as OpenOTP mobile Push and license services.
# These features require a HTTPs outbound Internet access from the server.
cloud_services Yes
```

Restart WebADM services to changes takes effect.

```
[root@webadm1 ~]# /opt/webadm/bin/webadm start
```

```
Checking libudev dependency... Ok
```

```
Checking system architecture... Ok
```

```
Checking server configurations... Ok
```

```
Found Trial license (RCDEVSSUPPORT)
```

```
Licensed by RCDevs Security SA to RCDevs Support
```

```
Licensed product(s): OpenOTP,SpanKey,TiQR
```

```
Starting WebADM PKI service... Ok
```

```
Starting WebADM Session service... Ok
```

```
Starting WebADM Watchd service... Ok
```

```
Starting WebADM HTTP service... Ok
```

```
Checking server connections...
```

```
Connected LDAP server: LDAP Server (192.168.3.60)
```

```
Connected SQL server: SQL Server (192.168.3.68)
```

```
Connected PKI server: PKI Server (127.0.0.1)
```

```
Connected Session server: Session Server (:::1)
```

```
Checking LDAP proxy user access... Ok
```

```
Checking SQL database access... Ok
```

```
Checking PKI service access... Ok
```

```
Checking Cloud service access... Ok
```

Your WebADM server is now configured with RCDevs Cloud Service and you can use feature which are allowed by your license.

## 2.2 Optional

› If you must pass external communications through a proxy, the proxy must be configured in

```
/opt/webadm/conf/servers.xml like below:
```

```
<ProxyServer name="HTTP Proxy"  
  host="squid.rcdevs"  
  port="3128"  
  user="webadm"  
  password="password"  
  ca_file="" />
```

Restart WebADM services so the changes take effect.

*This manual was prepared with great care. However, RCDevs Security S.A. and the author cannot assume any legal or other liability for possible errors and their consequences. No responsibility is taken for the details contained in this manual. Subject to alternation without notice. RCDevs Security S.A. does not enter into any responsibility in this respect. The hardware and software described in this manual is provided on the basis of a license agreement. This manual is protected by copyright law. RCDevs Security S.A. reserves all rights, especially for translation into foreign languages. No part of this manual may be reproduced in any way (photocopies, microfilm or other methods) or transformed into machine-readable language without the prior written permission of RCDevs Security S.A. The latter especially applies for data processing systems. RCDevs Security S.A. also reserves all communication*

*rights (lectures, radio and television). The hardware and software names mentioned in this manual are most often the registered trademarks of the respective manufacturers and as such are subject to the statutory regulations. Product and brand names are the property of RCDevs Security. © 2024 RCDevs Security S.A., All Rights Reserved*